

# twilight

INSTRUMENTOS DE MEDICIÓN INDUSTRIAL

## Ficha Técnica SL-UFDX5

[www.twilight.mx](http://www.twilight.mx)

 / [twilightsadecv](https://www.facebook.com/twilightsadecv)

 / [twilightsadecv](https://twitter.com/twilightsadecv)

 / [twilightsadecv](https://www.youtube.com/twilightsadecv)



## Ultrasonic Flaw Detector

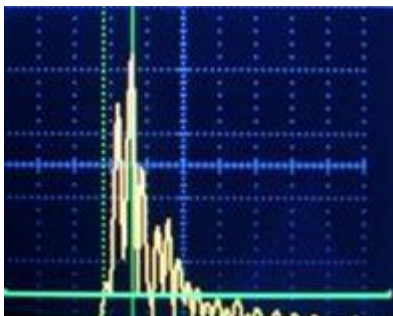
UFD-X5



### X Series : High Performance

UFD X series Ultrasonic Flaw Detector could meet a variety of demands with superior features , which include portable, flexible, rapid and accurate.

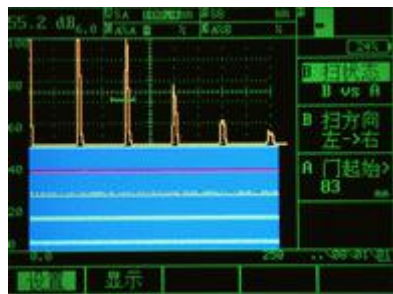
High cost effective makes X series be the best choice for developing companies.



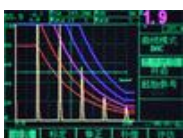
Feature Indicator



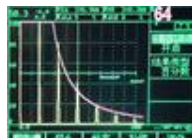
Value Display Area



Two Dimension Color Code B Scan



DAC Curve



DGS Curve

### FEATURES:

- One Function Key, Easily Operate
- Ideal Menu Style
- Auto Calibration : Velocity, Probe Delay, Angle/K Value

### FUNCTION:

- USB for storage, **plug and play**  
Convenient to read thickness values
- **B Scan-Display Flaws Directly**  
Reducing analysis difficulty , missing detector
- **Massive Data Memory**  
200,000 values/5 minutes video
- **Electronic Choice : Flaw detector together with high accurate thickness measured**
- **5 Intelligent DAC curves , comply to JIS and API standard**

### OPERATION

- **High Accuracy: 10 places for AD samples**
- **Extra-long Standby Time:**  
20 hours, getting rid of trouble from battery
- **Display screen could be adjusted to provide 5 optimum **brightness****
- **Magnesium alloy case, AP65 encapsulation, strong and durable , avoiding electro-magnetic interference**

SPECIFICATIONS
<b>Measuring Range</b> 1.0~12000mm
<b>Resolution</b> 0.01mm(<100mm) 1mm(>100mm)
<b>Velocity</b> 500~20000m/s 20 fixed velocities
<b>Delay</b> -20~3400us /resolution : 0.1us
<b>Probe Delay</b> 0~99us /resolution: 0.01us
<b>Auto Calibration</b> Velocity Calibration &Probe Delay Calibration
<b>Linear Error</b> Horizontal error≤0.1% Vertical error≤3%
<b>Dynamic Range</b> ≥36dB
<b>Sensitivity</b> ≥64dB 200mmΦ2 flat-bottomed hole
<b>Dimension (mm)</b> 240×180×50mm
<b>Weight</b> 1.9Kg (including battery pack)
<b>Working Environment</b> Temperature: -20℃~70℃ Humidity: 5%~90%
<b>Pulse</b>
<b>Dive Pulse</b> Negative spikes, high energy/low adjustable
<b>Launch Repetition Frequency</b> PFR transmit pulse continuously adjustable
<b>Matched Damp</b> 50/150/400Ω
<b>Receiver</b>
<b>Measuring mode</b> Peak/Verge

<b>Bandwidth</b> 0.3~1/0.5~4/2~15MHZ
<b>Detector Pattern</b> 0~110dB 0/0.1/0.2/0.5/1/2/6/12/
<b>Detector Pattern</b> RF/Full-Wave/Positive/Negative/ half-wave
<b>Display</b>
<b>LCD</b> TFT Color Display 5 options for variable brightness
<b>GUI Theme</b> <b>Simple/Classical/Gray/Bright</b>
<b>Screen Update Rate</b> ≥60Hz
<b>GUI Theme</b> simple / classical / gray / strong / weak light 5, the user can through the set text A, background color, sweep waveform coordinate free custom theme
<b>Gate / measuring value / alarm</b>
<b>Sluice gate</b> Two Separated Gate A/B
<b>Measured value display</b> 5 measured value display area, where a main display area, Selectable measurement value content SA/SB/DA/DB/PA/PB/A%A/A%B/dBtA/ dBtB/dBrA/dBrB/SBA/DBA/PBA/LA/LB
<b>Alarm</b> Independent logic gate alarm, alarm threshold thickness measurement
<b>Storage</b>
<b>Channel Parameters</b> 20 groups
<b>Scan A</b> 2000
<b>Thickness values</b> 200,000 data, liner
<b>Wave video</b> 5 min
<b>Reference wave</b> 4
<b>Input / Output</b>
<b>Probe connector</b> LEMO or BNC
<b>Communication</b> RS232
<b>Regional</b>
<b>Clock</b> date and time

<b>Language</b> English
<b>Unit</b> mm/inch
<b>Battery</b>
<b>Battery</b> High-energy lithium batteries, excellent overcharge and over-discharge protection
<b>Battery Monitoring</b> Coulomb energy measurement based on battery monitoring, the percentage / time display the remaining battery life
<b>Working Hours</b> work continuously for more than 10 hours
<b>Battery Adapter</b> Input : 100~240V/50~60Hz Output : 9VDC/4A
<b>High ranking</b>
<b>U disk storage</b> Storage screenshots / waveform / thickness three data report
<b>Gate broadening</b> Gate area of concern for the details of observation and analysis
<b>B-scan two-dimensional coding</b> Thickness / contour scanning; grayscale / color palette settings
<b>Curve freeze</b> YES
<b>Characteristic indicator</b> Sound path measurement wave front and amplitude measurement position indicator
<b>CSC Surface Correction</b> According probe angle, diameter of the work piece thickness and curvature correction for the measured values
<b>Lock</b> Each menu can be locked independently to avoid system-related parameter adjustment; data set can also be locked to avoid accidental deletion of data
<b>Screen Saver</b> Standby / Text / off
<b>Equivalent curve</b>
<b>DAC curve</b> Can record 30 calibration points; Automatic Gain; any order calibration;



NDT expert

# Solid (Beijing) Technology Co., Ltd.

calibration / edit two modified methods; consider the material attenuation and surface compensation factor; five adjustable gain curve to assess compliance with JIS and API Standards
<b>DGS curve</b> For large flat-bottomed, flat-bottomed hole via three reference types, consider a reference attenuation, attenuation and surface material compensation factors, defect assessment methods: equivalent size / equivalent gain / percentage

<b>Standard</b>		
Main engine		1
Straight / angle probe		2
Probe line		1
Charger		1
Battery		1
<b>Optional</b>		
	Instructions	1
	Box	1
	Coupling paste	1

<b>Interface Gate</b> Intermediate medium for flooding situation testing
<b>Printer</b> TP serial printer, you can print directly screenshots / waveform / thickness of the three data report
<b>Large capacity battery</b> Can work continuously for more than 20 hours
<b>Communication</b> USB

# twilight

INSTRUMENTOS DE MEDICIÓN INDUSTRIAL



LLÁMANOS

+52(81) 8115-1400 / +52 (81) 8173-4300

LADA Sin Costo:  
01 800 087 43 75

E-mail:  
[ventas@twilight.mx](mailto:ventas@twilight.mx)

[www.twilight.mx](http://www.twilight.mx)



/ [twightsadecv](https://www.facebook.com/twightsadecv)



/ [twightsadecv](https://twitter.com/twightsadecv)



/ [twightsadecv](https://www.youtube.com/twightsadecv)